



**H.O.M.E. for the Future**  
**September 24-25, 2025**  
**In-Person Arrival Information**

**BUTLER COUNTY :: 9:30AM-3:00PM**

**Hosts:** The Four Seven Prison Ministry & Butler and Warren Counties Reentry Coalition

**Location:** **BOARD OF DEVELOPMENT DISABILITIES, 282 N FAIR AVE, HAMILTON, OH 45011**

**Arrival Instructions:** Check-in will start at 9:30; we plan on starting promptly at 10. Please enter through the side door at Butler County Board of Developmental Disabilities. We will have someone at the door welcoming you.

---

**CINCINNATI :: 8:30AM – 3:00PM**

**Host:** Hamilton County Office of Reentry & Montgomery County Office of Reentry

**Location:** **CINCINNATI STATE COMMUNITY COLLEGES, 3520 CENTRAL PKWY, CINCINNATI, OH 45223**

**Arrival Instructions:** Check in will start at 8:30AM For details, call the Hamilton County Office of Reentry at 513-946-4304. Download a map of the Clifton Campus [here](#).

---

**CLEVELAND :: 9:30AM – 2:00PM**

**Host:** reLink.org

**Location:** **CHRIST UNITED METHODIST CHURCH, 3625 W 138TH ST, CLEVELAND, OH 44111**

**Arrival Instructions:** Check will start at 9:30AM. The church is set back slightly from the intersection of Lorain Avenue and W. 137th. The main entrance to the church is on the W. 137 St. side. Look for the large double doors. There is lots of parking in the lots for the shopping

---

center on the other side of W. 137th (front or back lot). If you need to take public transportation, there are bus stops right near the church on Lorain Ave and the 22 bus runs regularly. Someone will be there to greet you upon your arrival.

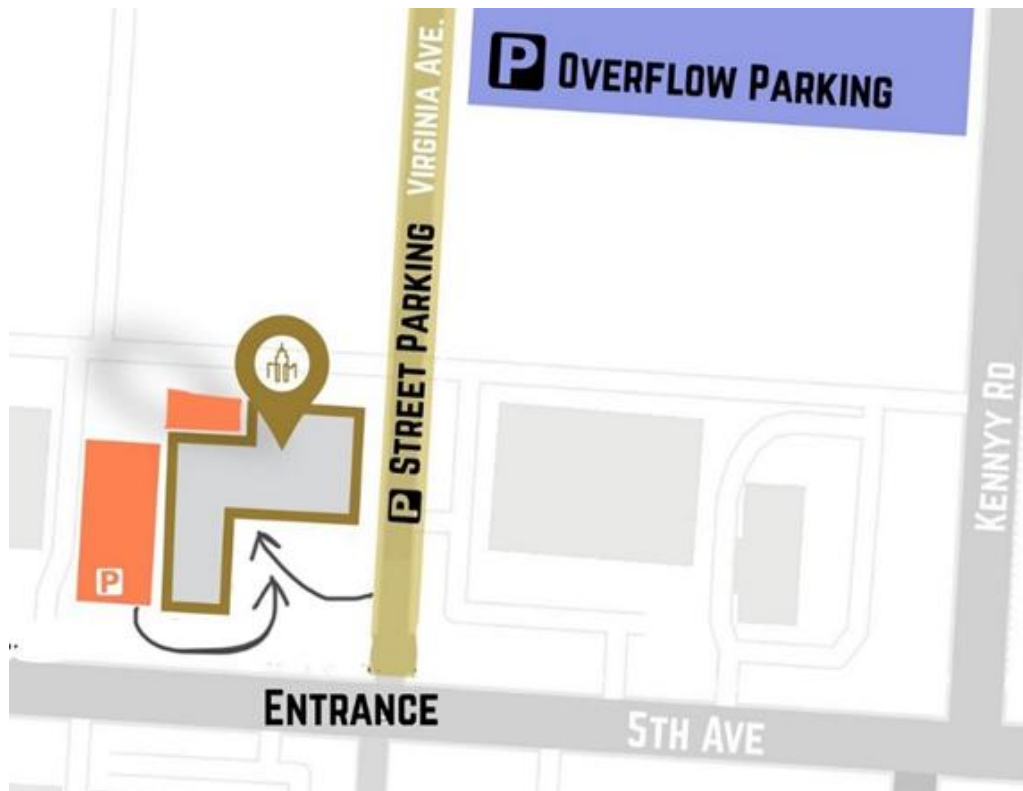
---

### **COLUMBUS :: 9:00AM – 2:00PM**

**Hosts:** Franklin County Office of Justice Policies and Programs & Accompanying Returning Citizens with Hope (ARCH)

**Location:** **CITYVIEW CHURCH**, 1150 West 5th Avenue, Columbus, OH 43212

**Arrival Instructions:** Check will start at 9:00AM. Limited parking is available off 5th Avenue between the Cityview Church building and the Glen Avenue Soap Company. Additional parking is one block away down Virginia Street at the corner of Virginia Street and 6th Avenue at the Columbus City Schools Tech Center. Virginia Street runs alongside Cityview Church, and street parking is available on Virginia Avenue, as well. Enter the building at the main entrance off the courtyard and follow signs to Fellowship Hall.



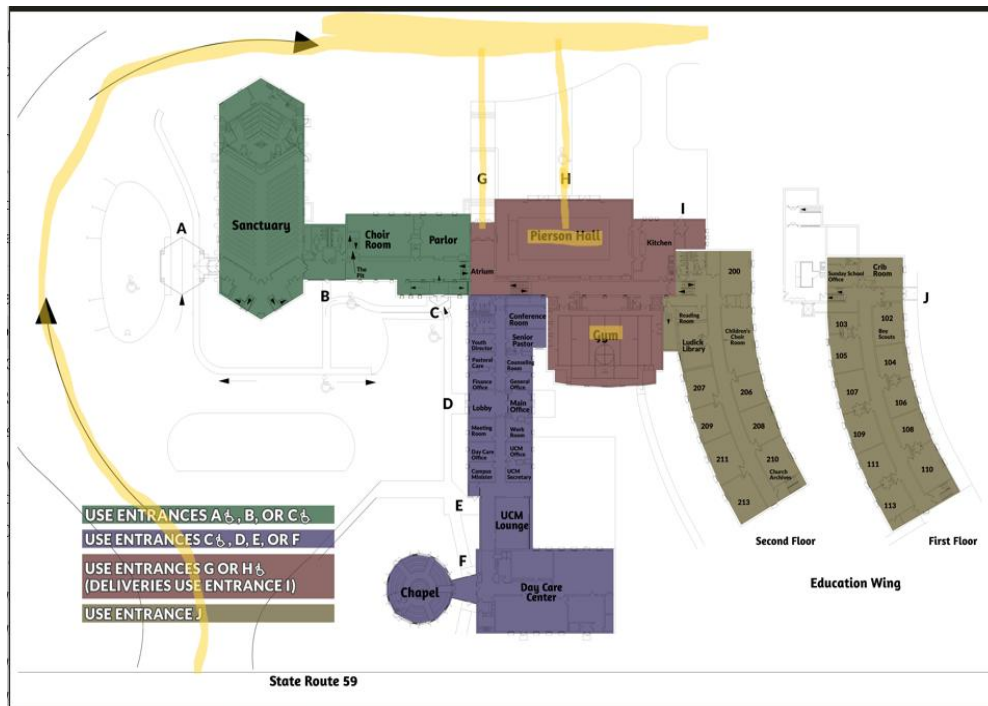
---

## PORTAGE COUNTY :: 9:30AM-4PM

**Host:** Kent State University Department of Sociology and Criminology

**Location:** **UNITED METHODIST CHURCH OF KENT**, 1435 E Main St, Kent, OH 44240

**Arrival Instructions:** Check will begin at 9:30AM. There are two parking entrances to the church. Regardless of which one used, proceed to the back of the church to the parking lot there for easiest access. (The entire parking lot is available for use.) At the back of the church, there are two entrances. Use the one on the left to enter directly into Pierson Hall. The event begins in Pierson Hall. Don't worry if you find yourself in the wrong entrance, there will be a volunteer or signs to help direct you.



---

## TOLEDO :: 9:30AM – 3:45PM

**Host:** Reentry Coalition of Northwest Ohio (RCNWO)

**Location:** **OHIO MEANS JOBS**, 3737 W SYLVANIA AVE, TOLEDO, OH 43623 in the Toledo Room

**Arrival Instructions:** Check in will begin at 9:30AM. Please have participants enter at Entrance A. There will be a security check. Please come straight back to the OhioMeansJobs - Resource Room to check in at the reception desk and proceed to the Toledo Rooms.

---

---

## **YOUNGSTOWN :: 9:30AM – 3:00PM**

**Hosts:** Route 11 Reentry Coalition & reLink.org

**Location:** **FIRST PRESBYTERIAN CHURCH, 201 WICK AVE, YOUNGSTOWN, OH 44503**

**Arrival Instructions:** Check will begin at 9:30AM.

### **Directions**

- From Downtown Youngstown: Head north on Wick Avenue. The destination will be on your right, just past the intersection with Wood Street and directly across from Youngstown Early College.
- From Youngstown-Warren Regional Airport: Drive south on State Route 193, then merge onto US-422 West. Take the Wick Avenue exit and proceed south. The destination will be on your left. The First Presbyterian Church is located just two blocks South of the Youngstown State University.

### **Parking and Building Access**

- Arrive at least 10-15 minutes early to allow for parking and check-in procedures.
- Parking is available in the lot adjacent to the north side of the building, where the main entrance (double glass doors) is also available. Parking is permitted in any space that is not designated as reserved/numbered. Additional parking may also be available on nearby streets.
- Check-in begins at 9:30 a.m.

### **Contact Information**

For questions or additional assistance, contact the office of Home for Good Reentry by calling 330 743 3700, or Lola Simmons at 330 506 7601. We look forward to seeing you! Thank you!