

# HOLY CURRENCIES

West Ohio Conference  
of The United Methodist Church



Missional congregations helping to build sustainable communities.

[www.westohioumc.org/holycurrencies](http://www.westohioumc.org/holycurrencies)

# HOLY CURRENCIES

West Ohio Conference  
of The United Methodist Church



Missional congregations helping to build sustainable communities.

[www.westohioumc.org/holycurrencies](http://www.westohioumc.org/holycurrencies)

# HOLY CURRENCIES

West Ohio Conference  
of The United Methodist Church



Missional congregations helping to build sustainable communities.

[www.westohioumc.org/holycurrencies](http://www.westohioumc.org/holycurrencies)

# HOLY CURRENCIES

West Ohio Conference  
of The United Methodist Church



Missional congregations helping to build sustainable communities.

[www.westohioumc.org/holycurrencies](http://www.westohioumc.org/holycurrencies)



# HOLY CURRENCIES



Missional congregations helping to build sustainable communities.

[www.westohioumc.org/holycurrencies](http://www.westohioumc.org/holycurrencies)



# HOLY CURRENCIES



Missional congregations helping to build sustainable communities.

[www.westohioumc.org/holycurrencies](http://www.westohioumc.org/holycurrencies)



# R.E.S.P.E.C.T. guidelines

**R**= take **RESPONSIBILITY** for what you say and feel without blaming others

**E**= use **EMPATHETIC** listening

**S**= be **SENSITIVE** to differences in communication styles

**P**= **PONDER** what you hear and feel before you speak

**E**= **EXAMINE** your own assumptions and perceptions

**C**= keep **CONFIDENTIALITY**

**T**= **TRUST** ambiguity, because we are not here to debate who is right or wrong

# R.E.S.P.E.C.T. guidelines

**R**= take **RESPONSIBILITY** for what you say and feel without blaming others

**E**= use **EMPATHETIC** listening

**S**= be **SENSITIVE** to differences in communication styles

**P**= **PONDER** what you hear and feel before you speak

**E**= **EXAMINE** your own assumptions and perceptions

**C**= keep **CONFIDENTIALITY**

**T**= **TRUST** ambiguity, because we are not here to debate who is right or wrong

# R.E.S.P.E.C.T. guidelines

**R**= take **RESPONSIBILITY** for what you say and feel without blaming others

**E**= use **EMPATHETIC** listening

**S**= be **SENSITIVE** to differences in communication styles

**P**= **PONDER** what you hear and feel before you speak

**E**= **EXAMINE** your own assumptions and perceptions

**C**= keep **CONFIDENTIALITY**

**T**= **TRUST** ambiguity, because we are not here to debate who is right or wrong

# R.E.S.P.E.C.T. guidelines

**R**= take **RESPONSIBILITY** for what you say and feel without blaming others

**E**= use **EMPATHETIC** listening

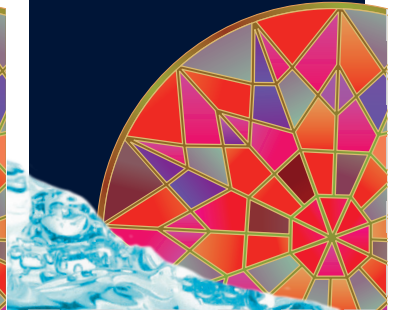
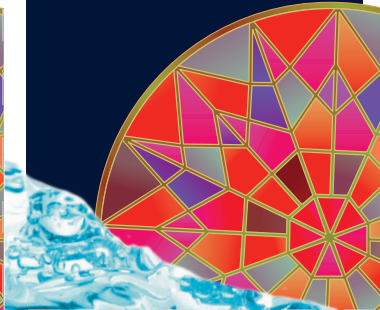
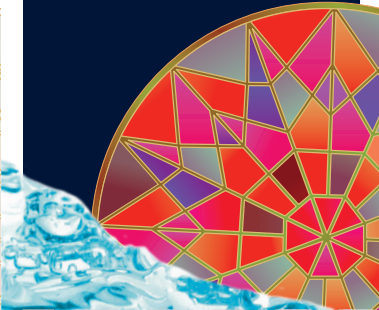
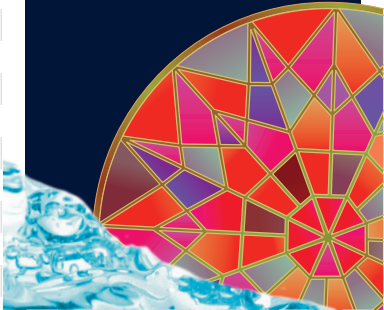
**S**= be **SENSITIVE** to differences in communication styles

**P**= **PONDER** what you hear and feel before you speak

**E**= **EXAMINE** your own assumptions and perceptions

**C**= keep **CONFIDENTIALITY**

**T**= **TRUST** ambiguity, because we are not here to debate who is right or wrong



# R.E.S.P.E.C.T. guidelines

**R**= take **RESPONSIBILITY** for what you say and feel without blaming others

**E**= use **EMPATHETIC** listening

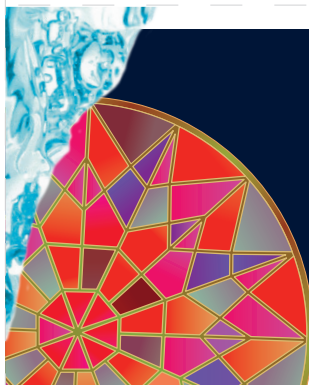
**S**= be **SENSITIVE** to differences in communication styles

**P**= **PONDER** what you hear and feel before you speak

**E**= **EXAMINE** your own assumptions and perceptions

**C**= keep **CONFIDENTIALITY**

**T**= **TRUST** ambiguity, because we are not here to debate who is right or wrong



# R.E.S.P.E.C.T. guidelines

**R**= take **RESPONSIBILITY** for what you say and feel without blaming others

**E**= use **EMPATHETIC** listening

**S**= be **SENSITIVE** to differences in communication styles

**P**= **PONDER** what you hear and feel before you speak

**E**= **EXAMINE** your own assumptions and perceptions

**C**= keep **CONFIDENTIALITY**

**T**= **TRUST** ambiguity, because we are not here to debate who is right or wrong

